

# PRACTICE MAKES PERFECT

Esteban Amaro & Teri Hedding  
Illinois Deaf and Hard of Hearing Commission Conference  
April 25, 2026

# Agenda



- Introductions
- Knowledge Check
- Mirror Interpreting Practice
- Practice sight translation
- Practice consecutive interpretation
- Practice simultaneous interpretation

# Esteban

Chicago, IL

2005- Began Interpreting  
Trilingual (ASL, SPA, ENG)

- Freelance
- K-12 and Postsecondary
- VRS
- Medical
- City of Chicago- MOPD



# Teri

- **Born:** California | **Lives:** Illinois (33 yrs)
- **Family:** Married to Steve; kids: Kelly & Sean
- **Career:** Longest job – Manager, Deaf Health Program, Mount Sinai
- **CDI:** Since 2009 | Favorite: Medical
- **Now:** Teaching at Moraine Valley Community College (MVCC)



before we  
begin

# Why Hire a Deaf Interpreter (DI)?



# Why Hire a Deaf Interpreter (DI)?



- Clear communication
- Cultural & ASL expertise
- Handles complex topics
- Builds trust & comfort
- Enhances interpreter teamwork
- Meets unique needs

**Which settings can be interpreted by  
Intermediate Licensed [Yellow] Interpreters?**

**Intermediate**

# Which settings can be interpreted by Intermediate Licensed [Yellow] Interpreters?

- Health Information Workshops
- Law Enforcement Workshops
- Conferences
- College Classes
- Video Relay Services
- Some Government Services:
  - IEP Meetings
  - Parent- Teacher Conferences
- Employment Maintenance
  - Staff Meetings
  - Trainings
- Limited Medical (Appointments with no Medical Diagnosis).
  - Home Care
  - AA Meetings
  - Testing (X-Ray, Blood Work, CAT Scan, MRI)



**Intermediate**

**Source:** *IDHHC website*, Illinois Deaf and Hard of Hearing Commission, <https://www.idhhc.state.il.us>

**Settings NOT permitted for  
Intermediate Licensed [Yellow] Interpreters**

**Intermediate**

## Settings NOT permitted for Intermediate Licensed [Yellow] Interpreters

- Legal
- Financial
- Doctor Appointments

**Intermediate**

**Source:** *IDHHC website*, Illinois Deaf and Hard of Hearing Commission,  
<https://www.idhhc.state.il.us>

# Learning Together

- Everyone has different styles and skills
- Be kind and respectful
- Help and support each other
- Safe space to learn and make mistakes
- Try your best
- Have fun 😊

# Mirror Interpreting



# Mirror Interpreting

The Deaf interpreter watches the original ASL signer or the hearing interpreter.

If the signer is Deaf, the interpreter mirrors the signs as closely as possible

If it is a hearing interpreter, the Deaf interpreter must interpret the message into clear ASL

The goal is to make the message clear for the audience

Focus on accuracy, timing, and visual clarity.

# Group Activity



# Grilling Techniques



MAC or PC?



# Sight Translation



# Sight Translation

Changing a message from English to ASL (or ASL to English)

Sharing the same meaning, not signing every single word

Making the message clear and easy to understand

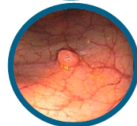
Check your message for accuracy and communicate clearly with your team.

# Colonoscopy: Gastroenterology Procedure Unit

## Screening Saves Lives

Colorectal Cancer is the second leading cancer killer in the United States. If you are 45 or older or have a family history of cancer, getting a colorectal screening can save your life.

- Colorectal Cancer often starts from a non-cancerous growth called a polyp that is in the rectum or colon.
- A colonoscopy can find **polyps** so that they can be removed before they turn into cancer.
- A colonoscopy can also find colorectal cancer early when the chances of being cured is good.



Colon Polyp

## Preparing For Your Exam: What to Bring

- An adult (18 or older) to drive you home. You can take a cab, medical transport or bus only if an adult is riding with you after your visit.
- All medications you take, even over the counter medications
- Any vitamins and supplements you take
- Your insurance card

## GoLyteLy and NulyteLy Bowel Prep

### 5 Days Before Your Exam

Fill your bowel prep prescription and review these instructions.

The colon must be cleared of all solid matter so that the doctor can see clearly.

**If your colon is not clean your exam may be cancelled.**



### 3 Days Before Your Exam

- **Do not** eat any raw fruits, raw vegetables, seeds or nuts and no dairy.
- Stop iron and fiber supplements
- Plan for your ride home

### 2 Days Before Your Exam

- **Do not** eat any raw fruits, raw vegetables, seeds or nuts and no dairy.
- Refrigerate bowel prep solution

# Group Activity



You are interpreting a meeting about:

**COLONOSCOPY**  
**PREPARATION**

# Colonoscopy: Preparing for Your Exam

## The Day Before Your Exam

**Do not eat any solid food. Begin clear liquid diet in the morning.**

- **Examples of clear liquids are:** clear broth (chicken or beef), water, apple juice, Gatorade, popsicles and coffee or tea (no milk or creamer). You can have hard candy.
- Drink **at least 8 glasses of water** or clear liquid to stay hydrated.
- **Do not** have any red or purple liquids

## 6pm The Day Before Your Exam

**Do not eat any solid food. Start drinking bowel prep**

- Drink 1 cup (8 ounces) of Bowel Prep Solution every 15 minutes
- Do this until half of it is finished. Finish the solution within 2 hours.
- Keep the other half of Bowel Prep Solution refrigerated.
- If you throw up, wait 30 minutes and begin drinking  $\frac{3}{4}$  of a cup (6 ounces) every 15 minutes until half of the bottle is finished.

### Tips

- Drink the dose quickly.
- Try drinking with a straw.
- Rinse your mouth with water or mouthwash.
- Suck on hard candy.



## 5 Hours Before Your Exam

- Take your doctor approved medication.
- You can take aspirin, blood pressure medication, prednisone or other steroids.
- **Drink the rest of the Bowel Prep Solution (half bottle) 1 cup every 15 minutes until the bottle is empty. Finish the solution within 2 hours after you start drinking it.**  
Do not skip this step. It is important to get the cleanest colon for a successful exam.
- You may have to wake up very early if your exam is in the morning.
- Your stool should be a clear yellow liquid.

## 2 Hours Before Your Exam

**Do not eat or drink anything or your exam may be cancelled.**

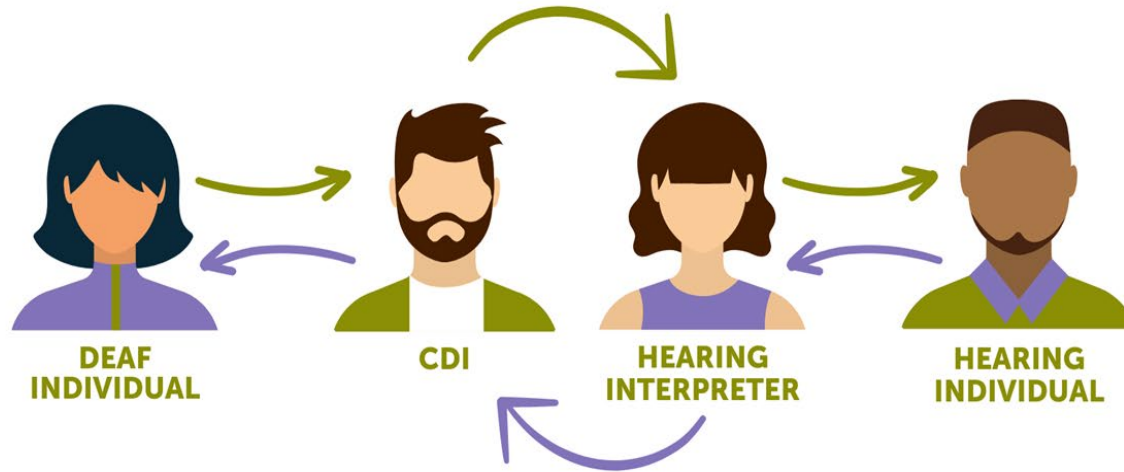
**Arrive to your exam 1 hour before the appointment time.**

To make, change, or cancel an appointment, call (773) 702-6767.

- Hyde Park Location:** Center for Care and Discovery (CCD) 7th Floor  
5700 South Maryland Ave, Chicago, IL 60637 **(773) 702-6767**
- Tinley Park Location:** Ingalls Family Care Center, Entrance C  
6701 West 159th Street Tinley Park, IL 60477 **(708) 429-0222**
- River East Location:** UChicago Medicine River East  
355 East Grand Ave, Chicago, IL 60611 **(773) 795-4662**
- Orland Park Location:** 14290 South Lagrange Road,  
Orland Park, IL 60462 **(773) 834-9445**



# Consecutive Interpreting



# Consecutive Interpreting

The hearing interpreter signs to the Deaf interpreter.

The Deaf interpreter waits to get the full information.

Then the Deaf interpreter interprets the message into ASL.

This step-by-step process keeps the message clear and correct.

# Group Activity



# Medical Setting

*Please fast for 12 hours.*

*Now that testing is complete, you will need to schedule a follow-up appointment with your doctor to discuss the results.*





## Department of Motor Vehicles (DMV)

*You need to bring two documents showing your address.*

*After that, we will take your photo, and you will pay the fee at the counter.*



## **Housing Assistance Agency**

*We help families apply for rental assistance.*

*I need to ask about your household income, the number of people living in your home, and whether you have received assistance this year.*



## **Job Interview**

*Tell me about your past experience.*

*What skills do you feel you bring to this position?*



# VR Appointment



# Interactive Interpreting- Job Interview



# Simultaneous Interpreting



# Simultaneous Interpreting

The hearing interpreter signs right away to the Deaf interpreter.

The Deaf interpreter signs right away to the Deaf consumer.

The message keeps moving without stopping.

The Deaf interpreter must change the message into clear ASL, not just copy the signs they see.

# Group Activity



# Every Type of Baby Cry Explained



# Food Safety





# RESOURCES

- **RID Professional Practice Paper- Deaf Interpreter** (<https://rid.org/wp-content/uploads/2025/01/RID-PPP-Deaf-Interpreter.pdf>)
- **WordHippo** (<https://www.wordhippo.com/>)
- **WordReference** (<https://www.wordreference.com/>)
- **CATIE** (<https://noviceinterpreters.org/>)
- **Purdue OWL**  
([https://owl.purdue.edu/owl/multilingual/multilingual\\_instructors\\_tutors/esl\\_teacher\\_resources/index.html](https://owl.purdue.edu/owl/multilingual/multilingual_instructors_tutors/esl_teacher_resources/index.html))
- **UsingEnglish** (<https://www.usingenglish.com/>)

Thank  
You